

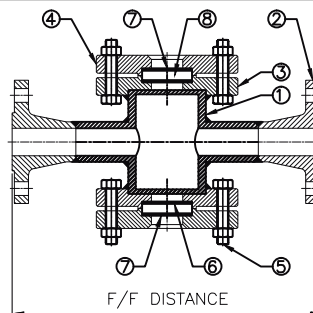
SPRAYTECH SYSTEMS (INDIA) PVT. LTD. offers sight flow indicators of following types:

- Double Window – Plain
- Double Window – Rotary Wheel
- Double Window – Flapper
- Double Window – Drip Tube
- Full View



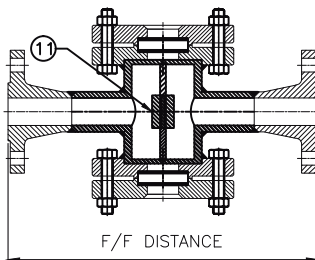
Double Window – Plain

This type of sight flow indicator is recommended where flow is turbulent. This flow indicator is used to monitor vertical or horizontal flow.



DOUBLE WINDOW – PLAIN

1. BODY
2. PROCESS FLANGE
3. GLASS HOLDER
4. COVER PLATE
5. FASTENER
6. GASKET
7. CUSHION
8. GLASS
9. FLAPPER
10. DRIP TUBE
11. ROTARY WHEEL



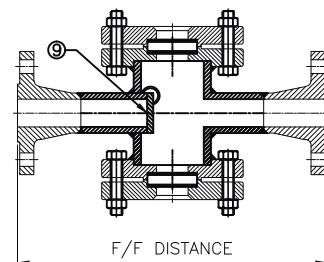
DOUBLE WINDOW – ROTARY WHEEL

Double Window – Rotary Wheel

This type of sight flow indicator is best suited for the lines carrying dark solutions where rotary movement can be easily detected.

Double Window – Flapper

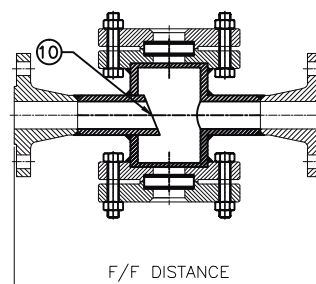
This type of sight flow indicator is recommended for vertical upward as well as horizontal flow. This flow indicator is suitable for colourless and transparent fluids.



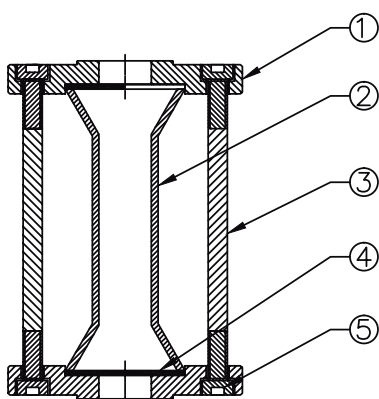
DOUBLE WINDOW – FLAPPER

Double Window – Drip Tube

This type of sight flow indicator is particularly recommended for vertically downwards flow lines having intermittent flow e.g. flow lines in distillation columns.



DOUBLE WINDOW–DRIP TUBE



FULL VIEW

Full View

This type of sight flow indicator is used for viewing the process flow to assure that the flow is continuous or to note the process turbidity, colour etc.

1/2"	PROCESS CONNECTION	FFD=160MM
3/4"	PROCESS CONNECTION	FFD=160MM
1"	PROCESS CONNECTION	FFD=160MM
1½"	PROCESS CONNECTION	FFD=190MM
2"	PROCESS CONNECTION	FFD=225MM
3"	PROCESS CONNECTION	FFD=275MM
4"	PROCESS CONNECTION	FFD=360MM
6"	PROCESS CONNECTION	FFD=450MM
8"	PROCESS CONNECTION	FFD=630MM
10"	PROCESS CONNECTION	FFD=750MM

Specifications

Type	:Double Window - Plain / Rotary Wheel / Flapper / Drip Tube / Full View
Body	:CS, SS 304, SS 304L, SS 316, SS 316L, others on request
Retainer Flange	:CS, SS 304, SS 304L, SS 316, SS 316L, others on request
Cushion / Gasket	:C.A.F. / P.T.F.E. / Graphoil
Glass	:Toughened Borosilicate
Process Connection	:Flanged / Screwed / Welded / Triclamp
Fasteners	:SS , ASTM A193 Gr. B7 / A 194 Gr. 2H